

Clinical, Electrocardiographic, and Electrophysiological Characteristics of Patients with Focal Atrial Tachycardia (FAT)

Peyman Tabatabaie, Shahrzad Shams-Eshaghi, Amirfarjam Fazelifar, Abolfath Alizadeh-Diz, Zahra Emkanjoo and Majid Haghjoo *

Cardiac Electrophysiology Research Center, Rajaie Cardiovascular Medical and Research Center, Iran University of Medical Sciences, Tehran, Iran

Abstract

Background: Although smaller studies have shown that the P-wave morphology from different anatomic locations, a detailed algorithm which characterizes the likely location of a tachycardia associated with a P-wave of unknown origin is still lacking. The purpose of this study was: 1) to perform a detailed analysis of the P-wave morphology in Focal Atrial Tachycardia (FAT) and to produce an algorithm for identification of the anatomic site of origin, and 2) to evaluate the clinical and electrophysiological characteristics of FAT.

Methods: In this retrospective study 146 patients underwent radiofrequency catheter ablation for right and left FATs and their clinical, electrocardiographic, and electrophysiological characteristics were included.

Results: One hundred forty-six patients with FAT were included in the study (56% of them were female, mean age: 46 ± 15 years, age range: from 15 to 86 years). The distribution of Atrial Tachycardia (AT) was 78% in right atrial and 22% in left atrial region. The most common site for right-sided ATs was crista terminalis while pulmonary vein was the most common origin for the left ATs. A female predominance of 60% was seen in right-sided AT and a male predominance of 60% was among left-sided tachycardias ($p=0.04$). Lead V1 was the most useful lead to distinguish right tachycardias from the left one. Atrial electrogram-P wave interval at successful ablation site was significantly longer among left-sided ATs (45 ± 7 vs. 41 ± 7 ms, $p=0.006$).

Conclusion: This study shows a significant gender differences between right and left ATs. Leads V1 and I were the most useful leads to localize the FAT. Proposed P-wave algorithm could determine the likely origin of tachycardia in 95% of the patients.

Keywords: Atrial tachycardia, P-wave morphology, Electrophysiology

*Corresponding author

Majid Haghjoo, MD, FACC

Cardiac Electrophysiology Research Center, Rajaie Cardiovascular Medical and Research Center, Tehran 1995614331, Iran

Tel: +98 21 2392 3830

Fax: +98 21 2204 8174

E-mail: majid.haghjoo@gmail.com

Received: 3 Jun 2018

Accepted: 27 Jun 2018

Citation to this article: Tabatabaie P, Shams-Eshaghi S, Fazelifar A, Alizadeh A, Emkanjoo Z, Haghjoo M. Clinical, Electrocardiographic, and Electrophysiological Characteristics of Patients with Focal Atrial Tachycardia (FAT). *JIMC*. 2018;1(1):17-23.

Introduction

Sustained Focal Atrial Tachycardia (FAT) is an uncommon form (5-15%) of supraventricular tachycardias¹. The specific anatomic structures determine the preferential sites of origin of FAT. In the Right Atrium (RA), arrhythmia origins from the cluster at the Crista Terminalis (CT)². Other right-sided foci are distributed within the Tricuspid Annulus (TA)³, the Ostium of the Coronary Sinus (CS-OS)⁴, the Right Atrial Appendage (RAA)⁵, and the perinodal region⁶. Left-sided FATs predominantly originate from the Pulmonary Vein (PV) ostia⁷ and less commonly from the Mitral Annulus (MA)⁸, the Left Atrial Appendage (LAA)⁹, and the left-sided septum¹⁰.

Medical management of FAT is difficult in the majority of the patients. Fortunately, Radiofrequency Catheter Ablation (RFCA) revolutionized the treatment of the FAT with short and long-term success^{11,12}. Although successful ablation depends eventually on detailed mapping, the 12-lead Electrocardiogram (ECG) is nonetheless a very useful tool in guiding catheter ablation. Several studies have previously described P-wave morphologies related to atrial arrhythmias originating from specific anatomic regions; however, there is a few practical algorithms to localize the tachycardia origin before procedure^{13,14}.

The aim of present study is to develop a new algorithm and to prospectively evaluate the clinical utility of it in localizing the origin of tachycardia throughout detailed analysis of P-wave Morphology (PWM) on the surface ECG.

Patients and Methods

Study population

The study population consisted of a consecutive series of 146 patients (mean age: 46.0±15.5 years, range: 15-86 years) who had undergone RFCA for FATs. All patients had clinically documented paroxysmal or incessant Atrial Tachycardia (AT). Patients with multiple AT morphologies were excluded. The study protocol was approved by local Ethics Committee and all patients provided written informed consents before electrophysiological study and catheter ablation taking place.

Electrophysiology study and catheter ablation

All antiarrhythmic drugs were discontinued at least

5 half-lives before the procedure. The procedure was performed in the fasting state with infusion of a mild intravenous sedation such as fentanyl and midazolam. Catheter positioning and the approach used in our laboratory for ablation of AT was based on standard electrophysiological methods. Briefly, three quadripolar catheters were positioned into the High Right Atrium (HRA), HIS Bundle region (HB), and Right Ventricular apex (RVA). A multipolar catheter was placed in the Coronary Sinus (CS) for recording CS and Left Atrial (LA) activity. A trans-septal puncture was performed using an 8.5 F Agilis™ steerable introducer and 98 cm BRK™ trans-septal needle (St. Jude Medical Inc., Minnetonka, USA) for patients who required LA mapping and ablation.

Standard electrophysiological criterion was used to confirm FAT diagnosis: that included the inability to demonstrate entrainment at two locations with characteristics of being “in the circuit” and greater than 2 cm apart¹⁵. Attempts at arrhythmia induction were made using atrial programmed extra stimulation and burst atrial pacing. If this was unsuccessful or when AT did not occur spontaneously, then isoproterenol was infused. Anatomic localization of the atrial focus was performed during tachycardia or atrial ectopy by analysis of surface P-wave Morphology (PWM) and atrial endocardial activation sequence during tachycardia. On the basis of the provisional findings from PWM and the atrial endocardial sequence from standard catheters, point mapping to locate the site of earliest endocardial activation relative to surface P-wave (in lead V1) onset was performed with a 4-mm tip mapping/ablation catheter.

P-wave morphology

Surface ECG PWM was analysed during periods of atrioventricular block or after ventricular pacing. P waves were included for analysis only if an isoelectric interval was present and there was no fusion with the preceding QRS or T-wave. P-waves were described on the basis of the deviation from baseline during the T-P segment as being: 1) positive (+); 2) negative (-); 3) isoelectric: no P-wave deviation from a baseline; and 4) biphasic (+/- or -/+). Sensitivity, specificity, Positive Predictive Value (PPV), and Negative Predictive Values (NPVs) were calculated as the distinguishing features at each site.

Table 1. Baseline characteristics in patients with right and left atrial tachycardias

	Right AT (n=114)	Left AT (n=32)	P-value
Age, years	47±15	46±16	0.70
Female gender, %	60	40	0.04
Symptom duration, years	6.0±3.2	5.6±2.8	0.50
No underlying heart disease, %	83	72	0.34
LV ejection fraction, %	52±6.5	51±6.0	0.77
LV end-systolic dimension, mm	36±2.8	37±2.3	0.06
LV end-diastolic dimension, mm	46±3.4	47±3.0	0.08
Left atrium size, mm	27±4	28±5	0.48
Tachycardia cycle length, ms	337±43	343±43	0.50
Follow-up duration, months	23±15	24±15	0.90

Abbreviations: AT= Atrial Tachycardia; LV=left ventricular;

Development of ECG algorithm

On the basis of the tabulated P-wave features for each anatomic location, an algorithm was developed to determine anatomic site of the origin of tachycardia. The algorithm was modified and tested against ten P-waves randomly selected from the original population until an accuracy of 95% was achieved.

Prospective application of the algorithm

The algorithm was prospectively applied, by 2 blinded observers to a new population of 20 consecutive patients with focal AT who underwent successful RFA. The observer described the PWM as defined earlier. Also the algorithm was strictly followed.

Statistical analysis

All variables are expressed as mean SD. Comparisons between groups were performed with either an unpaired Student t test or, where a normal distribution could not be assumed, the Mann-Whitney U test was carried out. Categorical variables expressed as numbers and percentages were compared with a chi-square test. A p value of 0.05 was considered statistically significant.

Results

Patient characteristics

The study population consisted of 146 patients with FAT. There were 82 (56%) women and 64 (44%) men; indicating a female predominance of 60% seen in right-sided AT and a male predominance of 60% in left-sided tachycardias (p=0.04). Tachycardia-related symptoms had been present for 6.0±3.0 years and all patients had tried at least one antiarrhythmic drug before ablation. Left-sided tachycardias were more

likely to require class I or III antiarrhythmic agents to be controlled (30% vs. 20%, p=0.001). The majority of the patients (81%) had no underlying heart disease with a mean LA size of 28±4.5 mm and left ventricular function of 52 ± 6.4% (Table 1). Left ventricular dysfunction was similarly prevalent among right- and left-sided ATs (p=0.77).

Anatomical distribution of tachycardia

Tachycardia foci were localized to the RA (RA-AT) in 114 (78%) patients, the RA (RA-AT), while the LA (LA-AT) in 32 (22%) patients. RA-AT was most likely to originate from CT (n=50). The other origin sites of RA-AT were CS-OS (n=28), right perinodal (n=16), TA (n=14), and RAA (n=6). The most common site for LA-AT was PV ostia (n=23). The less frequent loci for LA-AT were MA (n=5), LAA (n=2), and left perinodal region (n=2). Among four PVs, the left superior PV (n=10) was the predominant site of AT. In remaining patients, right superior PV (n=8), left inferior PV (n=3), and right inferior PV (n=2) were the AT origin, respectively.

P-wave morphologies in tachycardias of different origins

Right vs. left FAT: to determine the efficacy of surface ECG in localizing tachycardia focus to right or left atrium, we evaluated leads I, aVL, and V1.

A negative or positive-negative P-wave in lead V1 had a sensitivity of 89% and specificity of 100% for RA focus. On the other hand, a positive or negative-positive P-wave was associated with a sensitivity of 100% and specificity of 89% for LA-AT.

A negative or isoelectric P-wave in lead I was 53% sensitive and 90% specific for LA-AT. However, a positive P-wave in lead I showed a sensitivity of 96% and a specificity of 83% for RA-AT.

A negative P-wave in aVL was associated with a sensitivity of 73% and a specificity of 33% for LA-AT. A positive P-wave in lead aVL had a sensitivity of 17% and a specificity of 75% for RA-AT.

CT AT: Of 50 AT originating from CT, 39 had positive-negative P-wave morphology in lead V1; eight had positive P-wave in V1 and 3 had negative P-wave in V1. All 11 patients with positive or negative P-wave during tachycardia had identical P-wave morphology during Sinus Rhythm (SR). Main mimic of AT originating from CT was AT arising from the Right Superior Pulmonary Vein (RSPV). All 8 patients with RSPV origin represented with positive P-wave during tachycardia. Among these patients, 5 were positive-negative and 3 were positive in V1 during SR. Therefore, SR P-wave morphology in lead V1 is highly helpful in differentiating AT originating from CT and those arising from RSPV.

All patients with CT focus showed positive P-wave in leads I, II, aVF, and V2-V6. P-wave was positive in 42 and isoelectric in 8 patients in lead III. Lead aVR was negative in all cases. Lead aVL showed negative P-wave in 41, positive P-wave in 1, and isoelectric in 8 patients.

Positive P-wave in leads I, II, and aVF, negative P-wave in aVR, and biphasic (or if positive in tachycardia, also positive in SR) in V1 were associated with a sensitivity of 94% and a specificity of 96% for AT arising from CT.

CS-OS AT: all CS-OS AT showed negative P-waves in inferior limb leads (II, III, aVF) and positive P-waves in leads aVL and aVR. P-wave in Lead I was positive in 4 and isoelectric in 24 patients.

The lead V1 P-wave was negative in 4, isoelectric-positive in 12, and negative-positive in 12 patients. However, P-waves were either negative (n=24) or isoelectric (n=4) in lead V6.

Negative P-wave in inferior leads, positive P-wave in aVL and aVR, isoelectric-positive or negative-positive P-wave in V1, and negative or isoelectric P-wave

in V6 was associated with a sensitivity of 86% and a specificity of 89% for CS-OS AT.

Right septal AT: All inferior leads showed either negative (n=12) or negative-positive (n=4) P-waves. Isoelectric P-wave in Lead V1 is associated with a specificity of 100% and a sensitivity of 69%. All 16 ATs in this category showed a positive P-wave in leads aVL and aVR.

TA AT: AT from TV characteristically showed negative P-wave in all precordial leads. A P-wave morphology that is negative in lead V1 and positive or isoelectric P-wave in Lead I was of 100% sensitivity and 76% specificity for AT originating from TV. RAA AT showed a P-wave morphology very similar to AT from anterolateral TV.

PV AT: All ATs originating from PV were characterized by a positive P-wave in inferior leads, a negative P-wave in lead aVR, and positive or rarely isoelectric P-waves in leads V1-V6.

In left PV ATs, a negative or isoelectric P-wave in lead aVL, a bifid positive P-wave in inferior leads and a positive P-wave in lead V1 depicted a sensitivity of 100% and a specificity of 96%.

In right PV ATs, a positive P-wave in lead I, a negative P-wave in lead aVL, and positive P-waves in leads V1-V6 showed a sensitivity of 90% and a specificity of 98%.

MA AT: A P-wave morphology combination, including an isoelectric P-waves in Leads I and aVL and negative-positive P-waves in leads V1-V6, was associated with a sensitivity of 100% and a specificity of 100% for anterior or anterolateral MV ATs. Posterior MA ATs were similar to CS-OS ATs.

LAA AT: Negative P-wave in leads I and aVL was associated with a specificity of 100% and sensitivity of 100% for LAA AT.

Left septal AT: there was significant overlap between left septal and right septal ATs.

Electrophysiologic and radiofrequency ablation characteristics: Mean tachycardia cycle length was similar in right- and left-sided ATs (337 ± 43 vs. 343 ± 43 ms, $p=0.50$). Left-sided ATs were more likely to be initiated spontaneously or induced by isoproterenol (78% vs. 25%, $p=0.002$). And were more likely to be

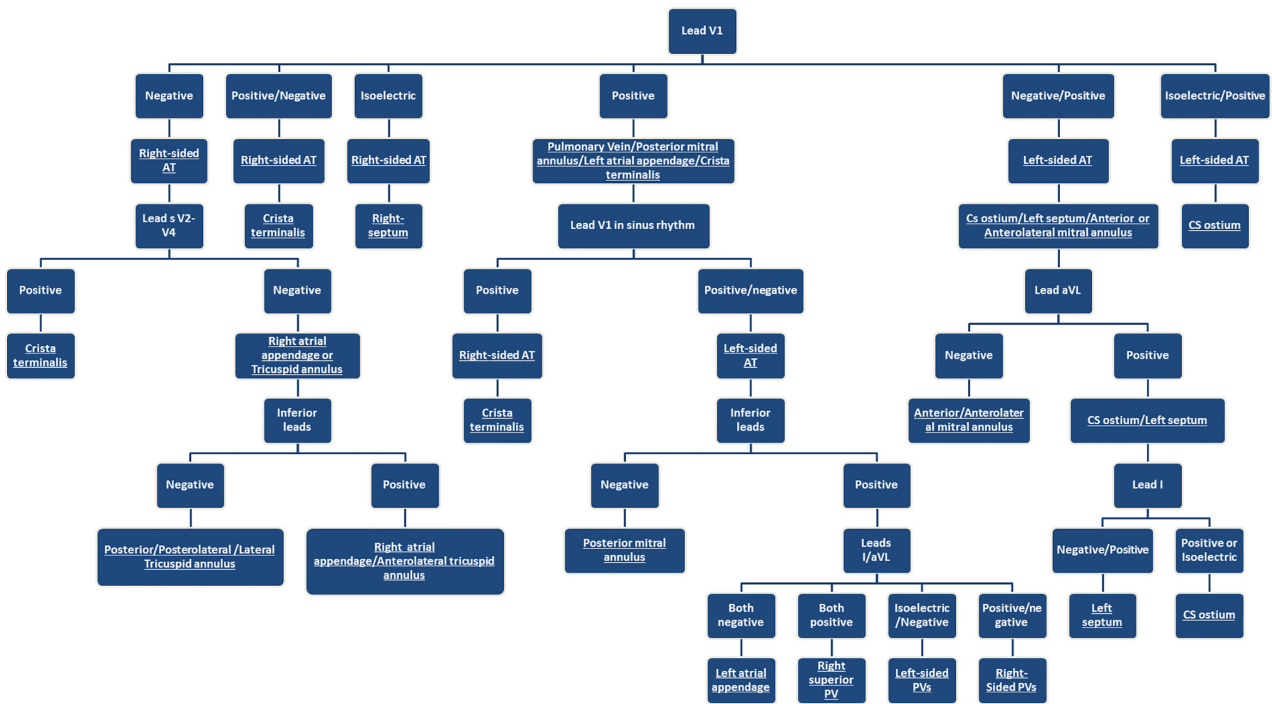


Figure 1. Algorithm for localizing focal AT using P-wave morphologies in 12-lead ECG

incessant needing a termination by RFA (9.4% vs. 1.8%, p=0.04). Atrial electrogram-P-wave interval at successful ablation site was significantly longer in left-sided ATs (45±7 vs. 41±7 ms, p=0.006).

ECG Algorithm for localizing atrial tachycardia

On the basis of our data, we developed an algorithm to predict the most likely origin of AT before the catheter ablation (Figure 1).

Prospective evaluation of ECG algorithm

This algorithm was prospectively tested in a new population of 20 consecutive patients with FAT by two observers. Tachycardia locations for these 20 patients were: CT (n=6); TA (n=2); CS ostium (n=3); RAA (n=2); right perinodal (n=1); MA (n=1); RSPV (n=1); LSPV (n=1); Left Inferior Pulmonary Vein (LIPV) (n=1); LAA (n=1); and left septum (n=1). The correct site of tachycardia origin was detected in 19 of 20 tachycardias by both observers (95%). However both observers, incorrectly suggested a CS ostium location for a tachycardia originating on the posterior MA using the algorithm.

Follow-up

Early complications (puncture-site hematoma, pericardial effusion/tamponade) occurred in eight patients (5.5%) before being discharged from hospital. These complications were more common in left-sided ATs (12.5% vs. 3.5%, p=0.05). During follow-up time

mean: (23±15 months) eight patients (5.5%) showed a recurrence of original tachycardia. Recurrence rate was similar in right- and left-sided tachycardias (5.3% vs. 6.3%, p=0.82). No mortality was reported during follow-up.

Discussion

Our findings show that: 1) there is significant gender differences between right and left FATs; 2) FATs tend to have particular anatomic distributions in the right and left atria and these anatomic locations are highly predictable by characteristic PWMs; 3) left-sided FATs presented with significantly longer atrial electrogram-P wave interval at successful ablation site.

Gender differences

Gender differences have been clearly reported in certain types of supraventricular tachycardia. A clear female predominance has been observed in atrioventricular nodal re-entrant tachycardia, whereas accessory pathway-mediated tachycardia was more frequent in men. There are few data on gender-related differences in FAT, however Rodriguez *et al*¹⁶ reported a similar proportion of AT between men and women. Similarly, Hu *et al*¹⁷ found no gender-related differences in 298 patients with FATs. In a study by Porter *et al*¹⁸, AT comprised a similar proportion among men and women. The present study confirmed the results of prior studies in all study subjects. However, subgroup analysis showed a female

predominance in right-sided ATs and a male predominance in left-sided ATs. Hu *et al*¹⁷ reported a similar left atrial involvement between men and women with FAT. This discrepancy may be explained by differences in mean age of the men and women. Mean age of men was higher than women in Hu *et al* study¹⁷; however, women were older than men in the present study.

Electrocardiographic differentiation of right and left FAT

Detection of origin of arrhythmia has important implications for planning ablation procedure. In the present study, PWM in lead V1 was the best discriminator for distinguishing right from left ATs. A negative or positive-negative P-wave in lead V1 was 100% specific for RA-AT, while it was 100% sensitive for LA-AT. Lead I was the second most useful lead; a negative or isoelectric P-wave in this lead was highly specific (90%) for LA-AT. A positive P-wave in lead I was highly sensitive (96%) for RA-AT. The least useful lead was aVL; a negative P-wave in aVL was associated with a moderate sensitivity of 73% for LA-AT and a positive P-wave had a moderate specificity of 75% for RA-AT. Precordial lead V1 is recording ECG from right-anterior part of the thorax, therefore, this lead can easily distinguish electrical data of RA free wall (right and anterior structure) from LA free wall (left and posterior structure). However, frontal leads I and aVL gather electrical activity of the heart from high lateral position. Therefore, these leads may be more useful to distinguish electrical activity of superior structures (high crista, PV) from inferior structures (CS-OS, posterior TV, and Posterior MA). This may explain why lead V1 was more useful than leads I and aVL.

There are limited studies on P-wave analysis of FAT. In a very first study, Tang *et al*¹⁴ investigated P-wave PWM in 31 patients with FAT, where leads V1 and aVL were most beneficial leads in distinguishing right from left AT. In another study, Kistler *et al*¹³ performed a detailed analysis of PWM on 126 patients with FAT, and they found that the most useful lead for right vs. left AT differentiation was V1. In both studies, the main disadvantage of V1 was related to the fact that positive P-wave could not distinguish between tachycardia originating from high CT from that from RSPV. Both studies reported an interesting observation. RSPV ATs showed a change in PWM

from positive-negative in SR to positive in tachycardia, however, CT AT showed an identical morphology in SR and tachycardia. We observed similar change in PWM from biphasic (positive-negative) in SR to positive in tachycardia in 5 patients out of 8 with RSPV AT, but not in any with CT AT.

The spatial limitation of PWM analysis are highlighted in localizing septal AT. The prior studies reported significant overlap in PWM of right- and left-sided septal AT. We confirmed this observation in our series.

Electrophysiological characteristics of FAT

Mean endocardial activation time at successful ablation site was significantly longer in left-sided ATs (45 ± 7 vs. 41 ± 7 ms, $p=0.006$). This finding can be explained by the fact that activation timing was measured from the onset of the P-wave in lead V1 of the surface ECG (arbitrarily assigned a time of 0 ms) to the distal bipoles of ablation catheters. Lead V1 is closer to right-sided tachycardia foci than left-sided tachycardia origins. Spontaneous initiation or induction of isoproterenol and then refractoriness to overdrive pacing are all in favour of abnormal automaticity as the major mechanism for left-sided ATs. However, induction and termination by programmed stimulation are supportive of micro-re-entry or triggered activity as the main mechanisms for the RA-AT. These differences in mechanisms of tachycardia are mainly related to the dominant site of origin of tachycardias.

Study limitations

The results of the present study should be interpreted in the light of certain limitations: first of all our results cannot be extrapolated to the macroreentrant atrial tachycardias in the setting of operated or unoperated congenital heart disease, extensive linear atrial ablation (such as AF ablation), and extensive atrial scarring. Secondly we had no cases of AT originating from Superior Vena Cava (SVC), Inferior Vena Cava (IVC), aortic cusps, and ligament of Marshall.

Conclusion

This study shows significant gender differences between right and left ATs. Leads V1 and I were the most useful leads to localize the origin of FAT. Proposed P-wave algorithm could determine the likely origin of tachycardia in 95% of the patients.

References

1. Roberts-Thomson KC, Kistler PM, Kalman JM. Focal atrial tachycardia I: clinical features, diagnosis, mechanisms, and anatomic location. *Pacing Clin Electrophysiol*. 2006;29(6):643-652.
2. Kalman JM, Olgin JE, Karch MR, Hamdan M, Lee RJ, Lesh MD. "Cristal tachycardias": origin of right atrial tachycardias from the crista terminalis identified by intracardiac echocardiography. *J Am Coll Cardiol*. 1998;31(2):451-459.
3. Morton JB, Sanders P, Das A, Vohra JK, Sparks PB, Kalman JM. Focal atrial tachycardia arising from the tricuspid annulus: electrophysiologic and electrocardiographic characteristics. *J Cardiovasc Electrophysiol*. 2001;12(6):653-659.
4. Kistler PM, Fynn SP, Haqqani H, Stevenson IH, Vohra JK, Morton JB, et al. Focal atrial tachycardia from the ostium of the coronary sinus: electrocardiographic and electrophysiological characterization and radiofrequency ablation. *J Am Coll Cardiol*. 2005;45(9):1488-1493.
5. Roberts-Thomson KC, Kistler PM, Haqqani HM, McGavigan AD, Hillock RJ, Stevenson IH, et al. Focal atrial tachycardias arising from the right atrial appendage: electrocardiographic and electrophysiologic characteristics and radiofrequency ablation. *J Cardiovasc Electrophysiol*. 2007;18(4):367-372.
6. Frey B, Kreiner G, Gwechenberger M, Gössinger HD. Ablation of atrial tachycardia originating from the vicinity of the atrioventricular node: significance of mapping both sides of the interatrial septum. *J Am Coll Cardiol*. 2001;38(2):394-400.
7. Kistler PM, Sanders P, Fynn SP, Stevenson IH, Hussin A, Vohra JK, et al. Electrophysiological and electrocardiographic characteristics of focal atrial tachycardia originating from the pulmonary veins: acute and long-term outcomes of radiofrequency ablation. *Circulation*. 2003;108(16):1968-1975.
8. Kistler PM, Sanders P, Hussin A, Morton JB, Vohra JK, Sparks PB, et al. Focal atrial tachycardia arising from the mitral annulus: electrocardiographic and electrophysiologic characterization. *J Am Coll Cardiol*. 2003;41(12):2212-2219.
9. Yamada T, Murakami Y, Yoshida Y, Okada T, Yoshida N, Toyama J, et al. Electrophysiologic and electrocardiographic characteristics and radiofrequency catheter ablation of focal atrial tachycardia originating from the left atrial appendage. *Heart Rhythm*. 2007;4(10):1284-1291.
10. Marrouche NF, SippensGroenewegen A, Yang Y, Dibs S, Scheinman MM. Clinical and electrophysiologic characteristics of left septal atrial tachycardia. *J Am Coll Cardiol*. 2002;40(6):1133-1139.
11. Anguera I, Brugada J, Roba M, Mont L, Aguinaga L, Geelen P, et al. Outcomes after radiofrequency catheter ablation of atrial tachycardia. *Am J Cardiol*. 2001;87(7):886-890.
12. Lesh MD, Van Hare GF, Epstein LM, Fitzpatrick AP, Scheinman MM, Lee RJ, et al. Radiofrequency catheter ablation of atrial arrhythmias. *Circulation*. 1994;89(3):1074-1089.
13. Kistler PM, Roberts-Thomson KC, Haqqani HM, Fynn SP, Singarayar S, Vohra JK, et al. P-wave morphology in focal atrial tachycardia: development of an algorithm to predict the anatomic site of origin. *J Am Coll Cardiol*. 2006;48(5):1010-1017.
14. Tang CW, Scheinman MM, Van Hare GF, Epstein LM, Fitzpatrick AP, Lee RJ, et al. Use of P wave configuration during atrial tachycardia to predict site of origin. *J Am Coll Cardiol*. 1995;26(5):1315-1324.
15. Saoudi N, Cosio F, Waldo A, Chen SA, Iesaka Y, Lesh M, et al. A classification of atrial flutter and regular atrial tachycardia according to electrophysiological mechanisms and anatomical bases: A Statement from a Joint Expert Group from The Working Group of Arrhythmias of the European Society of Cardiology and the North American Society of Pacing and Electrophysiology. *Eur Heart J*. 2001;22(14):1162-1182.
16. Rodriguez LM, de Chillou C, Schläpfer J, Metzger J, Baiyan X, van den Dool A, et al. Age at onset and gender of patients with different types of supraventricular tachycardias. *Am J Cardiol*. 1992; 70(13):1213-1215.
17. Hu YF, Huang JL, Wu TJ, Higa S, Shih CM, Tai CT, et al. Gender differences of electrophysiological characteristics in focal atrial tachycardia. *Am J Cardiol*. 2009;104(1):97-100.
18. Porter MJ, Morton JB, Denman R, Lin AC, Tierney S, Santucci PA, et al. Influence of age and gender on the mechanism of supraventricular tachycardia. *Heart Rhythm*. 2004;1(4):393-396.